

VOLUNTEER OPPORTUNITIES



THE POSITIVE
EFFECTS OF
VOLUNTEERING

Year 2025

MAKE A DIFFERENCE

Get a closer look on how to

GET INVOLVED

Issue 01

Inside: An assortment of opportunities and information on how to apply

TABLE OF CONTENTS

INSIDER

- Opportunities in tutoring
- Opportunities in food banks
- Opportunities in mentoring
- Opportunities in working with animals
- Opportunities in working with the community
- Opportunities in the arts/culture
- Opportunities in the Church



1429 Fritz Drive. Bethlehem, PA 18017
Gwendolyn Flores (610) 419-0368 | Maribel Ortiz (610) 865-8301
info@betha.com
www.bethlehemhousing.org



INSIDE
SCOOP
WITH

THE LITERACY CENTER

ABOUT:

The Literacy Center offers ESL classes to more than 400 students at various levels – from Beginner to Transitional – to help develop their listening, speaking, reading, and writing skills. Our students consistently meet or exceed all Pennsylvania Department of Education benchmarks for Educational Functional Level (EFL) gains. Our ESL classes are facilitated by highly trained teachers and supported by dedicated volunteers.

The Literacy Center provides a computer lab and access to specialized educational software to help students develop their literacy skills outside of regular class time. The Literacy Center reaches a significant number of immigrants and refugees who are motivated to build upon their literacy and English language skills so that their families can thrive in the United States. Our ESL students have represented nearly every country in the world.

1132 Hamilton Street. Allentown, PA 18101

"THE LITERACY CENTER REMINDS ME EVERY
WEEK THAT THERE IS GOOD IN THIS WORLD
AND I CAN BE A PART OF IT."
– BILL LANDAUER, LITERACY CENTER TUTOR

HOW TO APPLY:

Please visit,
theliteracycenter-lv.org/volunteer/
For more information.

Contact:

Phone: 610-435-0680 ext.804

Email: info@theliteracycenter-lv.org



INSIDE
SCOOP
WITH

CAREER PATHWAYS GED PROGRAM

LEHIGH CARBON COMMUNITY COLLEGE

718 Hamilton St, Allentown, PA 18101

ABOUT:

Help adult students build their reading, writing, math, and language skills. Tutors are needed to work with students at least three hours per week.

HOW TO APPLY:

To participate, you must attend a tutor orientation and periodic training sessions. To be eligible to serve as a tutor, you must have a bachelor's degree. For more information call **610-799-1657** or email, volunteertutor@lccc.edu





INSIDE
SCOOP
WITH

BETHLEHEM H.O.P.E. PANTRY

NORTHAMPTON COMMUNITY COLLEGE

511 East Third Street. Bethlehem, PA 18015

ABOUT:

Staffed by volunteers, the pantries provide non-perishable food items, and some wellness items, that are donated and gathered through NCC's food drives. Second Harvest Food Bank provides additional support to the H.O.P.E. Food Pantry at Bethlehem. Today, the pantries continue to help college students on their path to success!

HOW TO APPLY:

We could always use your help! Please contact the faculty advisors listed at the site you would like to volunteer! Thank you for volunteering for a great cause!

Contact:

Michele Cohen, Assistant Professor, NSO
and Faculty Advisor (Bethlehem)

Email: mcohen@northampton.edu



A caregiver in a pink uniform is standing and smiling while assisting an elderly man seated at a table. The man is using a fork and knife to eat a meal of rice, vegetables, and tomatoes. A glass of water is on the table. The caregiver has her hand on the man's shoulder. The scene is set in a bright room with large windows. A red triangle is in the top left corner.

INSIDE
SCOOP
WITH

MEALS ON WHEELS

GREATER LEHIGH VALLEY

1302 N. Sherman St. Allentown, PA 18109

ABOUT:

Welcome to Meals on Wheels, where our legacy is built on a foundation of compassion, community, and dedicated service. For over 50 years, we have been passionately committed to serving seniors and adults with disabilities, fostering a sense of well-being and connection within our community.

HOW TO APPLY:

Please visit mowglv.org/get-involved/
For more information.

Contact:

Phone: 610-691-1030



INSIDE
SCOOP
WITH



ALLENTOWN AREA ECUMENICAL FOOD BANK

417 N. 14th St. Allentown, PA 18102

ABOUT:

The Allentown Area Ecumenical Food Bank offers opportunities to fight hunger through volunteering.

Responsibilities include assisting clients with shopping or carrying groceries to the front of the building. Additionally, jobs like packing products into bins or bags are available. Shifts are weekdays from 8:30 a.m. to 12:00 p.m. and Thursdays from 3 to 6 p.m. Most volunteers serve 1 to 2 times per month.

Join us to make a difference in the community!

HOW TO APPLY:

Please visit allentownfoodbank.org/how-to-help/#volunteer
For more information.

Contact:

Phone: 610-821-1332

Email: ask@allentownfoodbank.org





INSIDE
SCOOP
WITH

BIG BROTHERS

BIG SISTERS OF THE LEHIGH VALLEY

41 S. Carlisle St., Allentown, PA 18109

ABOUT:

Founded in 1971, Big Brothers Big Sisters of the Lehigh Valley is a part of national organization working to clear the path to a child's biggest possible future.

We are a movement of change-makers creating a powerful ripple effect in our communities, our nation and our world. Joining parents with our staff, we match each child with a mentor to foster a friendship built on trust, learning and growth. Together, we are Defenders of Potential.

HOW TO APPLY:

Please visit
www.bbbslv.org/volunteer.html
For more information.

Contact:
Phone: 610-432-8000
Email: bbbs@bbbslv.org

BIG STORIES, BIGGER IMPACT JUNE 5, 2025

ON MAY 13TH, BIG BROTHERS BIG SISTERS OF THE LEHIGH VALLEY HOSTED OUR ANNUAL BIG STORIES EVENT AT STEEL STACKS IN BETHLEHEM. THIS CELEBRATION RECOGNIZED THE POWER OF MENTORSHIP AND THE IMPACT IT HAS ON LITTLES, BIGS AND OUR COMMUNITY. WE HONORED OUR MATCH OF THE YEAR, LITTLES OF THE YEAR, AND MORE!

INSIDE
SCOOP
WITH



YMCA OF BETHLEHEM

ABOUT:

Make a difference by volunteering at the YMCA! Share your time and skills as a mentor, coach, event helper, or committee member, and help strengthen your community.

There are three different kinds of volunteers:

Event Volunteers: Volunteer at special events held throughout the year at our branches. Volunteers may be needed in concessions, parking, crafts, road guards and more.

Program Volunteers: Assist with programs and specific department within the Y including sports and leagues and Welcome Center.

Board and Committee Members: Must be nominated. Contact your local branch for details.

Youth volunteers must have completed sixth grade to qualify for volunteering at the Y.

430 East Broad Street, Bethlehem, PA 18018

HOW TO APPLY:

Please visit
www.ymcarivercrossing.org/community-family/volunteer
For more information.

Contact:
Phone: 610-867-7588

INSIDE
SCOOP
WITH



LEHIGH VALLEY HUMANE SOCIETY

640 DIXON STREET ALLENTOWN, PA 18103

ABOUT:

Saving animals from neglect, abandonment, and abuse through rescue, rehabilitation, and adoption.

HOW TO APPLY:

Please visit lehighvalleyhumanesociety.org/volunteering For more information.

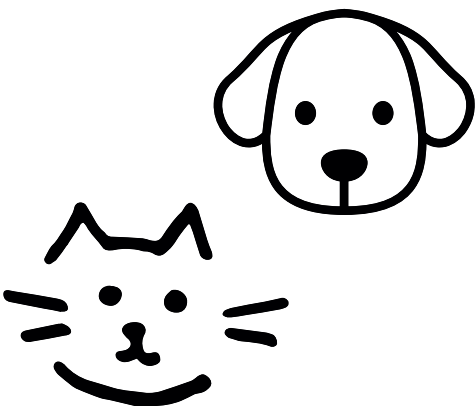
Types of Volunteering:

- Dog Walking
- Cat Care
- Small Animal Squad
- Keep Our Shelter Sparkling

Contact Information:

Phone: (610) 797-1205

Email: INFO@LEHIGHHUMANE.ORG



INSIDE
SCOOP
WITH

LAST CHANCE RANCH

9 Beck Road. Quakertown, PA 18951

ABOUT:

Last Chance Ranch is a non-profit organization rescuing and rehabilitating equines, farm and domestic companion animals. LCR is dedicated to promoting and educating the public to humane and responsible treatment of equines, farm animals and other domestic companion animals including dogs and cats. LCR provides a safe and secure refuge for abused, unwanted or neglected animals. LCR rehabilitates the physical ailments of these rescued animals and places them into homes where they receive the love, attention and care they deserve. Our follow-up programs, educational seminars and clinics ensure their continued well-being.

HOW TO APPLY:

Please visit lastchanceranch.org/volunteer/
For more information.

Contact Information:

Phone: 215-538-2510

Email: pets@lastchanceranch.org

Types of volunteering:

Barn Duties
Kennel Duties
Office Duties
Onsite Events
Professional Services
Ranch Programs





INSIDE
SCOOP
WITH

ALLENTOWN HOSPICE

7535 Windsor Drive, Suite 100 Allentown, PA 18106

ABOUT:

Each day, hospice volunteers touch the lives of our patients and their families. Whether reading to a patient, preparing a meal for a family or cleaning up around the house, each gesture makes a meaningful impact on those we serve.

Whether you volunteer behind the scenes at the office or one-on-one with families, you are a valuable member of our hospice team. All volunteers receive free training at a local office.

HOW TO APPLY:

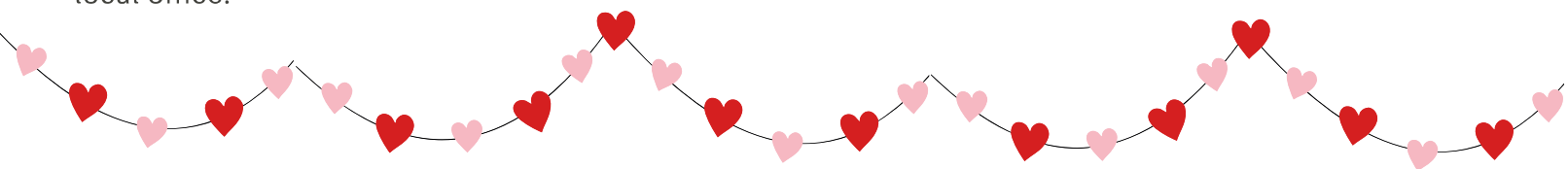
Please visit

www.compassus.com/locations/pennsylvania/allentown-hospice/#volunteer

For more information.

Contact:

Phone: 610-839-7084





INSIDE
SCOOP
WITH

THE SALVATION ARMY

521 Pembroke Road. Bethlehem, PA 18018

ABOUT:

At The Salvation Army in Bethlehem, we offer a variety of services and programs to assist the community. We serve with comprehensive social services, enrichment classes for children, and also serve as a place of worship every Sunday morning. Our doors are open to all.

HOW TO APPLY:

Please visit easternusa.salvationarmy.org/eastern-pennsylvania/bethlehem/volunteer
For more information.

Contact:

Phone: 610-867-4681





INSIDE
SCOOP
WITH

THE CARING PLACE

931 Hamilton St, Allentown, PA 18101

ABOUT:

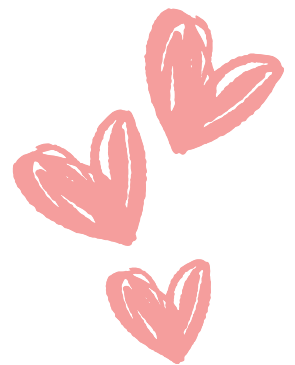
Our mission is to reach out to young people who may be exposed to drugs, violence, teen pregnancy, unemployment and hopelessness everyday.

The Caring Place provides programs and activities designed to help young people overcome the pressures and limitations of their environment. We want children and youth to believe that life offers more than the social ills around them. Therefore, our goals and objectives address the needs of these young people.

HOW TO APPLY:

Please visit
www.thecaringplace.org
For more information.

Contact:
Phone: 610-433-5683
Email: cplace200@aol.com



Kindness
MATTERS

A close-up photograph showing several hands of different skin tones working together to prepare food. One hand is holding a white bowl, another is adding green leafy vegetables, and a third is holding a clear plastic bag filled with more greens. The scene is brightly lit, suggesting a kitchen or food preparation area.

INSIDE
SCOOP
WITH

PINEBROOK

FAMILY ANSWERS

402 North Fulton St. Allentown, PA 18102

ABOUT:

At Pinebrook Family Answers our dedicated professionals are committed to providing quality services to vulnerable families residing in the Greater Lehigh Valley and beyond. Qualified and highly-skilled, our staff and resource parents are recognized in the community for their commitment to helping children and families in need. They not only play a critical role in the lives of the children, young adults, families, and seniors we serve, but in the successful outcomes they achieve.

HOW TO APPLY:

Please visit
pbfalv.org/volunteer/
For more information.

Contact:
Phone: 610-432-3919



INSIDE
SCOOP
WITH

AMERICAN

RED CROSS

Locations vary by zip code

ABOUT:

Red Cross volunteers and staff work to deliver vital services – from providing relief and support to those in crisis, to helping you be prepared to respond in emergencies.

HOW TO APPLY:

Please visit
www.redcross.org/volunteer/become-a-volunteer.html
For more information.



INSIDE
SCOOP
WITH

FRIENDS

OF THE ALLENTOWN PARKS

Allentown, PA

ABOUT:

With 39 parks covering over 2,000 acres of open space and 35 miles of trails, Friends can offer many volunteer opportunities. Whether you are an individual, group or business interested in a one-day or weekend-long event, we can provide you a perfect match. This is a great opportunity to "give back" to your community. We have lots of cleanup opportunities available. Select a park or playground near you or inquire as to parks in need and we will work to accommodate your interest. We provide gloves, trash bags and tools; you provide the energy and enthusiasm!

HOW TO APPLY:

Please visit
allentownparks.org/volunteer.html
For more information.

Contact Information:

Phone: 610-432-7275

Email: info@allentownparks.org



**"NATURE IS NOT A
PLACE TO VISIT,
IT'S A HOME."**

**-AMERICAN POET, GARY
SNYDER.**



INSIDE
SCOOP
WITH

BETHLEHEM AREA PUBLIC LIBRARY

11 W Church St, Bethlehem, PA 18018

ABOUT:

Volunteering at the Bethlehem Area Public Library is an opportunity to contribute your unique talents, skills and knowledge to meaningful tasks critical to the Library's operation.

HOW TO APPLY:

Please visit
www.bapl.org/give/volunteering/
for more information.

Contact:
Phone: 610-867-3761



LIBRARY





INSIDE
SCOOP
WITH

BOYS & GIRLS CLUB

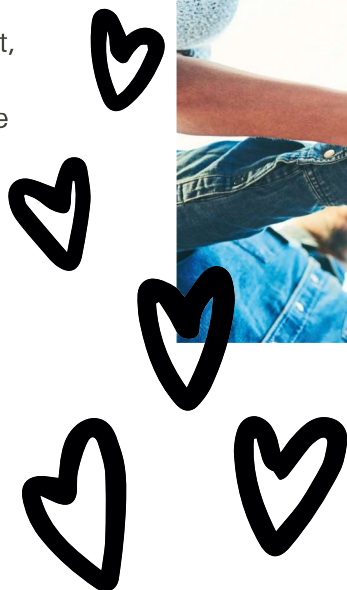
1430 Fritz Dr, Bethlehem, PA 18017

ABOUT:

To enable all young people, especially those who need us most, to reach their full potential as productive, caring and responsible citizens.

HOW TO APPLY:

Call **610-865-4241**
For more information on
how to apply.



INSIDE
SCOOP
WITH

NORTHEAST COMMUNITY CENTER

1161 Fritz Dr, Bethlehem, PA 18017

ABOUT:

Serving as the hub of the community, Northeast Community Center is a non-profit social service agency located in the heart Marvine-Pembroke, a low-income public housing neighborhood. Since 1980 our goal has always been to provide help and hope to those in our community and beyond by providing programs and services uniquely designed to fit their needs! Our programs are meant to serve all members of the household from youth through seniors. Our food pantry is offered to individuals of all ages and families of all sizes in the Bethlehem area and surrounding communities. We also offer youth and family programs such as our annual Summer Camp Program and monthly Family BINGO Night. No matter the need Northeast Community Center is here to help!

HOW TO APPLY:

Please visit neccbethlehem.org/get-involved/
For more information.

Contact:

Phone: 610-691-3355

Email: info@neccbethlehem.org



INSIDE
SCOOP
WITH

LYNFIELD COMMUNITY CENTER

HUMANITARIAN SOCIAL INNOVATIONS

301 Broadway, Suite 115 Bethlehem, PA 18015

ABOUT:

To provide a safe and supportive environment for the residents of our community through engaging educational and recreational programs available to adults and children of all ages. We envision a community where all generations feel empowered to continually improve themselves and their opportunities. Parents prosper, confident that their children are thriving in a positive and supportive environment. Schools will consider the Lynfield Community Center to be its engaged connection to creating positive outcomes for the students in the community. Donors, schools, adults and children are proud to be part of the Lynfield community.

HOW TO APPLY:

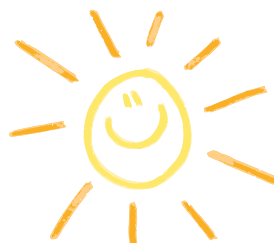
Contact:

For more information on how to volunteer:

Phone: 610-451-4798

Email:

office@humanitariansocialinnovations.com



INSIDE
SCOOP
WITH

HABITAT FOR HUMANITY

245 N. Graham St, Allentown, PA 18109

ABOUT:

Habitat Lehigh Valley is a volunteer-driven organization. Volunteers are an integral element of our mission. Your support is significant whether it is on the construction site, in the office or at the ReStore. Join us in the fight against poverty housing and homelessness!

HOW TO APPLY:

How to apply: Please visit habitatlv.org/volunteers

For more information.

Contact:

Phone: 610-776-7737

Email:

office@habitatlv.org



INSIDE
SCOOP
WITH

LEHIGH VALLEY HEALTH NETWORK

2545 Schoenersville Road. Bethlehem, PA 18017

ABOUT:

Our volunteers are special people committed to helping serve LVHN communities across the Lehigh Valley and Poconos. What's in it for you? Shared smiles, new skills and personal fulfillment: The intangible benefits of volunteering are numerous. We also offer tangible perks, including meal vouchers, free parking and free fitness center access.

HOW TO APPLY:

Please visit
www.lvhn.org/become_a_volunteer

Contact:
Phone: 610-969-2850



INSIDE
SCOOP
WITH

HEAD START OF THE LEHIGH VALLEY

1520 Hanover Ave. Allentown, PA 18102

ABOUT:

Love spending time with pre-school children in a structured setting? Volunteer in one of our Head Start or pre-K Counts classrooms located throughout the Lehigh Valley for one, two, or all five days a week. As a classroom assistant, you will help the teacher with daily classroom activities. Or, do you enjoy the office setting? We occasionally have bulk mailings, filing and shredding tasks that need to be completed.

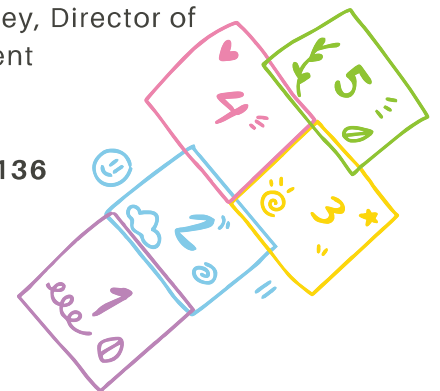


HOW TO APPLY:

Please visit
www.cscinc.org/donate/volunteer/
For more information.

Contact: contact Gillian Sharkey, Director of
Communication & Advancement

Email: gsharkey@cscinc.org
Phone: 610-437-6000 ext. 2136





INSIDE
SCOOP
WITH

LEHIGH VALLEY CHILDREN'S CENTER

1501 Lehigh St. Suite 208 Allentown, PA 18103

ABOUT:

LVCC warmly welcomes volunteers in a variety of flexible positions at our center locations and administrative office.

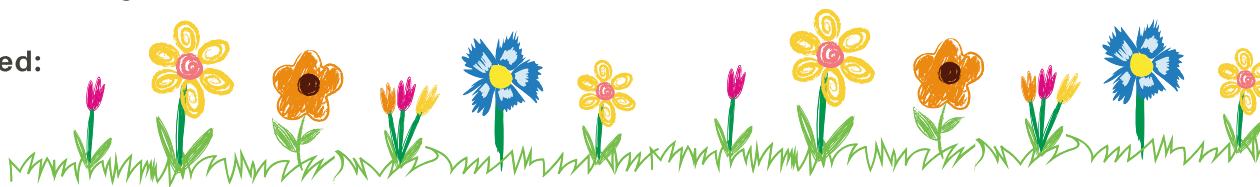
Opportunities are available for individuals, families, civic organizations and corporate teams. Volunteers can donate any number of hours. Volunteer once or make multiple visits. All volunteers must be 16 years of age or older. To work with children, volunteers who are 18 years or older must obtain Pennsylvania child abuse and criminal background checks.

Volunteers are needed:
In classrooms

HOW TO APPLY:

You set your own schedule!
Interested persons should
contact our administrative
office at **610-820-5333**
ext. 200.

MAKE IT
HAPPEN





INSIDE
SCOOP
WITH

VICTORY HOUSE OF LEHIGH VALLEY

314 Fillmore St. Bethlehem, PA 18015



ABOUT:

For over 35 years, Victory House has been a recognized leader in providing local homeless veterans and homeless men with opportunities to transition to independent affordable housing and to begin new lives. Hope, compassion, dignity, and respect are paramount to attaining our mission.

HOW TO APPLY:

Please visit www.victoryhouselv.org/get-involved
For more information.

Contact:

Phone: 610-691-3373



50-60%
GO ON TO INDEPENDENT
LIVING ARRANGEMENTS
APPROPRIATE TO THEIR
SITUATIONS

40-50%
SECURE SOME FORM OF
PERMANENT EMPLOYMENT

65-75%
LEAVE DRUG AND ALCOHOL
FREE





INSIDE
SCOOP
WITH

NEW BETHANY MINISTRIES

333 West 4th Street Bethlehem, PA 18015

ABOUT:

New Bethany offers hope and support to people who experience poverty, hunger, and homelessness. We believe that all people, regardless of circumstances, should be treated with dignity and care without judgment. No one who seeks help is turned away.

HOW TO APPLY:

Please visit
newbethany.org/volunteer/
For more information.

Contact:
Phone: 610- 691-5602



INSIDE
SCOOP
WITH

LEHIGH VALLEY PUBLIC MEDIA

PBS39, 91.3 WLVR, &
LEHIGH VALLEY NEWS

839 Sesame St. Bethlehem, PA 18015

ABOUT:

Lehigh Valley Public Media is the region's home for nonprofit public television, public radio, and local news. When you volunteer, you give part of yourself – your time, talent, energy and skills. You give back to your community. Volunteers help to support Lehigh Valley Public Media's mission to create a community that is inspired, engaged and vibrant. In addition to this, you have access to explore and witness us in action behind-the-scenes, you'll meet other volunteers and network with experienced staff, gain beneficial workplace skills, and help fulfill our educational mission. We invite you to join us!

HOW TO APPLY:

Please visit
www.wlvt.org/about/volunteer/
For more information.

Contact:

Phone: 610-867-4677



"THE SPIRIT OF FRED ROGERS' LEGACY OF EDUCATION, COMMUNITY, AND COMPASSION LIVES ON THROUGH OUR WORK OF ADDRESSING CRITICAL NEEDS IN OUR REGION."

-BOARD CHAIR, MIKE KEIM

INSIDE
SCOOP
WITH

ST LUKES

UNIVERSITY HEALTH NETWORK

Bethlehem & Allentown locations

ABOUT:

At St. Luke's, volunteers actively contribute to our programs and services. As a volunteer, you'll directly support our community members, gain hands-on experience, and collaborate with a dedicated team. Your talents can fill essential roles and enhance our outreach. Consider joining St. Luke's and experience the mutual benefits of giving back.

Benefits: Volunteering at St. Luke's not only allows you to give back to the community but also offers a range of benefits to enrich your experience. From exclusive discounts to opportunities for personal growth, we strive to make your time as a volunteer rewarding.

- Exclusive discounts
- Complimentary meals
- Recognition events
- Sense of fulfillment

HOW TO APPLY:

Please visit
www.slhn.org/volunteers#explore-volunteer-opportunities
For more information.

Contact:
Phone: 484-526-4600



INSIDE
SCOOP
WITH

MILLER-KEYSTONE BLOOD CENTER

1465 Valley Center Pkwy, Bethlehem, PA 18017

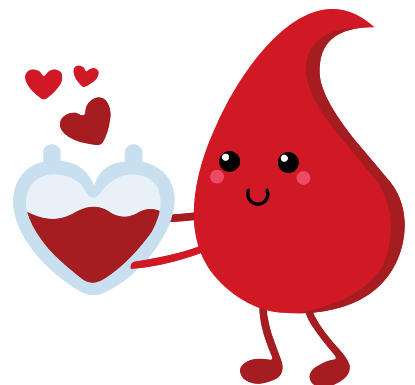
ABOUT:

Volunteers play a vital role in maintaining the blood supply for the community. From assisting donors to helping with administrative tasks behind the scenes, volunteers perform a wide range of important roles for Miller-Keystone Blood Center. Make new friends, learn new skills, explore career choices, and save lives.

HOW TO APPLY:

Please visit
www.giveapint.org/volunteer-time/
For more information.

Contact:
Phone: 800-223-6667



INSIDE
SCOOP
WITH



SAFE HARBOR EASTON

536 Bushkill Drive. Easton, PA 18042

ABOUT:

Safe Harbor Easton is a program-driven, transitional shelter for homeless, single individuals. It is also a drop-in program for low-income adults, particularly those who have difficulty with the tasks of daily life.



HOW TO APPLY:

Please visit
www.safeharboreaston.com/support-us
For more information.

Contact:
Phone: 610-258-5540
Email: Smassaro@safeharboreaston.org



A photograph of three women from behind, hugging each other. The woman on the left is wearing a red floral dress, the woman in the middle is wearing a blue dress, and the woman on the right is wearing a white and orange striped dress. The background is bright and sunny.

INSIDE
SCOOP
WITH

BLOOM FOR WOMEN

1425 Mountain Drive North Bethlehem, PA 18015

ABOUT:

Bloom offers sanctuary and a continuum of care to heal, empower and employ survivors of sex trafficking and sexual exploitation. As a faith-based non-profit, Bloom empowers women to heal and create a new future through its emergency response, its two-year residential program, pregnant and parenting survivor services and its independent living housing.

HOW TO APPLY:

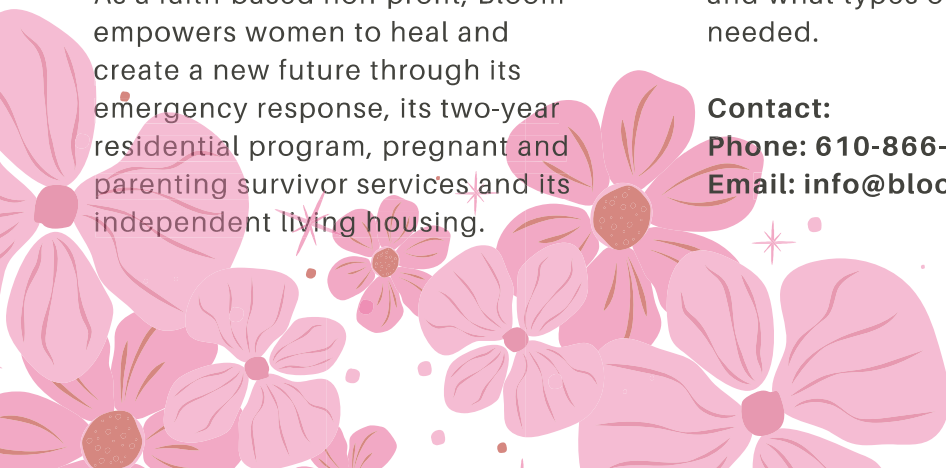
Please visit
bloomforwomen.org/get-involved#volunteer

For more information on how to apply and what types of volunteering are needed.

Contact:

Phone: 610-866-5755

Email: info@bloomforwomen.org





INSIDE
SCOOP
WITH

MUSEUM OF INDIAN CULTURE

2825 Fish Hatchery Road, Allentown, PA 18103

ABOUT:

Founded in 1980, the Museum of Indian Culture is a unique member-supported, volunteer run, non-profit resource center for people of all ages to learn about Native American cultures, especially from the northeast, but also throughout the western hemisphere. Our mission is to preserve and perpetuate the authentic histories and cultural heritage of Native American peoples--past, present, and future.

HOW TO APPLY:

Please visit
www.museumofindianculture.org/volunteering
For more information.

Contact:

Phone: 610-797-2121

Email: info@museumofindianculture.org



INSIDE
SCOOP
WITH

MILLER SYMPHONY HALL

23 N 6th Street. Allentown PA 18101

ABOUT:

It is the Mission of the Allentown Symphony Association to support a first-class symphony orchestra, to maintain an historic performance hall, and to offer to the community quality programs of artistic and educational value.

HOW TO APPLY:

Please visit millersymphonyhall.org/about/volunteer-opportunities/
For more information.

Contact:

Phone: 610-432-6715

Email: info@allentownsymphony.org

Types of volunteering:

- Ushering (Orchestra Concerts, Jazz Shows, Family Shows, Onstage and Partner Events)
- Community Outreach and Education Events
- Assisting with crafts during Family Programming
- El Sistema Lehigh Valley tutor/volunteer
- Office work
- Hosting a Schadt String Contestant in your home





INSIDE
SCOOP
WITH

ARTSQUEST CENTER AT STEELSTACKS

25 W 3rd St • Bethlehem, PA 18015

ABOUT:

ArtsQuest hosts over 4,000 events throughout the year including Oktoberfest, Christkindlmarkt, concerts at the ArtsQuest Center and Levitt Pavilion, Sabor, Sangriafest, and of course—Musikfest! During any season, you're sure to find an event that needs help from a passionate volunteer like yourself. Tasks typically include admissions, ushering, pouring beverages, assisting patrons at information tables, and keeping our events and festivals clean.

HOW TO APPLY:

Please visit
www.artsquest.org/support/volunteer/
For more information.

Contact:

Phone: 610-332-1300

Email: info@artsquest.org



INSIDE
SCOOP
WITH

THE BACH CHOIR OF BETHLEHEM

440 Heckewelder Place, Bethlehem, PA 18018

ABOUT:

The Bach Choir of Bethlehem is the oldest Bach choir in the United States, founded in 1898. It is known for its performances of J.S. Bach's music and has given the first American performances of his Mass in B Minor and Christmas Oratorio. The choir aims to inspire and enrich people through music, fostering a lifelong passion for the choral arts and building communities.

HOW TO APPLY:

Please visit
bach.org/volunteers-internships-and-house-staff/
For more information.

Contact:
Phone: 610-866-4382
Email: office@bach.org





INSIDE
SCOOP
WITH

HISTORIC BETHLEHEM MUSEUM & SITES

74 West Broad St. Suite 310 Bethlehem, PA

ABOUT:

Give back to your community and become a volunteer at Historic Bethlehem Museums & Sites!

We offer a variety of short and long-term volunteer opportunities that will allow you to share your talents and join a vibrant community of like-minded people.

HOW TO APPLY:

Please visit
www.historicbethlehem.org/join-support/volunteer/
For more information.

Contact:
Phone: 610-882-0450

INSIDE
SCOOP
WITH

CENTRAL ASSEMBLY OF GOD

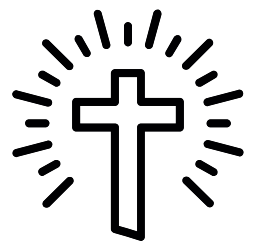
1300 Eaton Ave, Bethlehem, PA 18018

ABOUT:

Central Assembly of God's Vision is to bring people into a personal and intimate relationship with Christ which in turn causes them to display His likeness to those around them. Our services and events are geared toward introducing people to Christ, demonstrating His power to them, and equipping them to do the same in the church, their home, and the world. In Mark 16:20 NLT the Bible says, "And the disciples went everywhere and preached, and the Lord worked through them, confirming what they said by many miraculous signs." This is what we choose to embody and passionately pursue as a church.

HOW TO APPLY:

Call **610-865-0577** for more information on how to volunteer.



"FAITH IS NOT THE BELIEF THAT GOD WILL DO WHAT YOU WANT. IT IS THE BELIEF THAT GOD WILL DO WHAT IS RIGHT."

-MAX LUCADO

INSIDE
SCOOP
WITH

IGLESIA NUEVO AMANECER COB

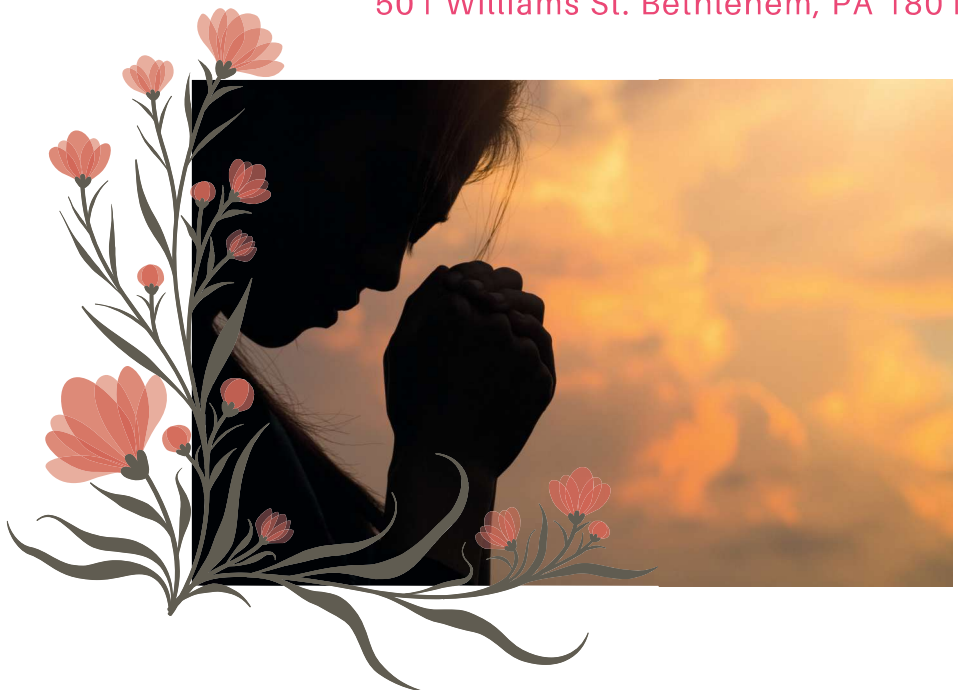
501 Williams St. Bethlehem, PA 18015

ABOUT:

Evangelical Church, A place of worship.

HOW TO APPLY:

Call **484-353-4497** for more information on how to volunteer.



INSIDE
SCOOP
WITH

⁴ Repay them for their deeds
and for their evil work;
repay them for what their hands have
done
and bring back on them what they
deserve.

⁵ Because they have no regard for the
deeds of the LORD
and what his hands have done,
he will tear them down
and never build them up again.

⁶ Praise be to the LORD,
for he has heard my cry for mercy.

⁷ The LORD is my strength and my
shield;
my heart trusts in him, and he helps
me.

My heart leaps for joy,
and with my song I praise him.

LILIES OF THE VALLEYS

4 SQUARE CHURCH

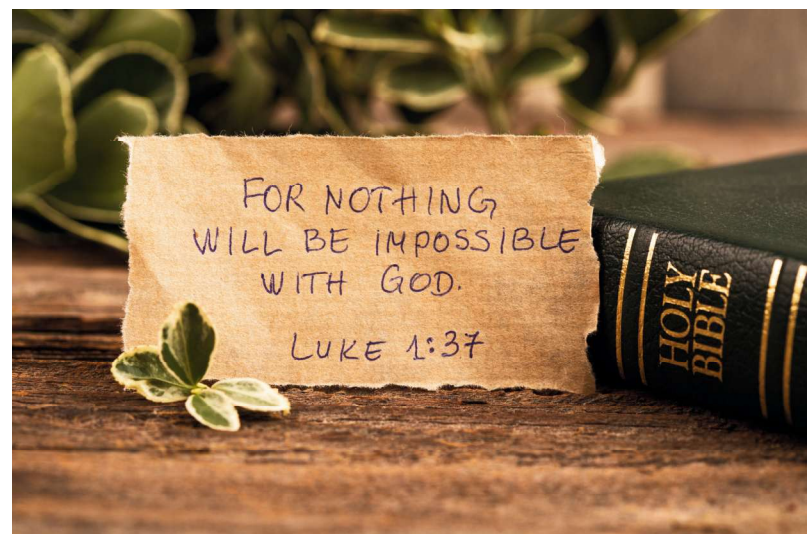
809 E 4th St, Bethlehem, PA 18015

ABOUT:

Pentecostal Church, a place
of worship.

HOW TO APPLY:

Call **610-865-3913** for
more information on how to
volunteer.





INSIDE
SCOOP
WITH

CATHEDRAL CHURCH OF NATIVITY

321 Wyandotte St, Bethlehem, PA 18015

ABOUT:

In the Body of Christ, there are a diversity of members with a diversity of gifts and talents, all used for the glory of God and the edification of Christ's Body on earth. At the Cathedral, parishioners use their gifts to help lead worship, feed the hungry, teach children's Sunday school, coordinate fellowship events, work for social, racial, and economic justice, provide pastoral care for parishioners in times of loss, and so much more. If you are interested in serving Christ through service at the Cathedral, please contact our office.

HOW TO APPLY:

Contact: Please call or email for more information on how to volunteer.

Email: admin@nativitycathedral.org

Office: 610-865-0727



INSIDE
SCOOP
WITH

LIFE CHURCH ALLENTOWN

38 S 8th St, Allentown, PA 18101

ABOUT:

At Life Church, our vision is clear: Love God. Love People. Do Something. We are dedicated to passionately loving God, compassionately loving people, and actively engaging in meaningful actions that reflect our faith. Our desire as a church community is to walk alongside you, your family, and your friends to help you Know & Follow Jesus! We achieve this through:

- Sunday Worship Gatherings: Join us for inspiring services that deepen your connection with God.
- Kids & Youth Programs: Engage the next generation with programs designed to nurture their faith.
- Small Groups (Discipleship): Participate in intimate groups that foster spiritual growth and community.
- Serve Teams: Use your talents to serve others and make a difference within our church and beyond.

HOW TO APPLY:

Contact:

Phone: 610-434-3117

For more information on how to volunteer.





VOLUNTEER WORK WITH CLEARANCES

IF CLEARANCES ARE NEEDED FOR A VOLUNTEER OPPORTUNITY, PLEASE CONTACT THE FSS DEPARTMENT MANAGER FOR ASSISTANCE WITH PROCESSING AND OBTAINING CRIMINAL BACKGROUND AND CHILD ABUSE CLEARANCES.

**CONTACT GWENDOLYN FLORES - FSS
MANAGER/RESIDENT INITIATIVE
COORDINATOR**

Contact number: **610-419-0368**



1429 Fritz Drive, Bethlehem, PA 18017
Gwendolyn Flores (610) 419-0368 | Maribel Ortiz (610) 865-8301
info@betha.com
www.bethlehemhousing.org